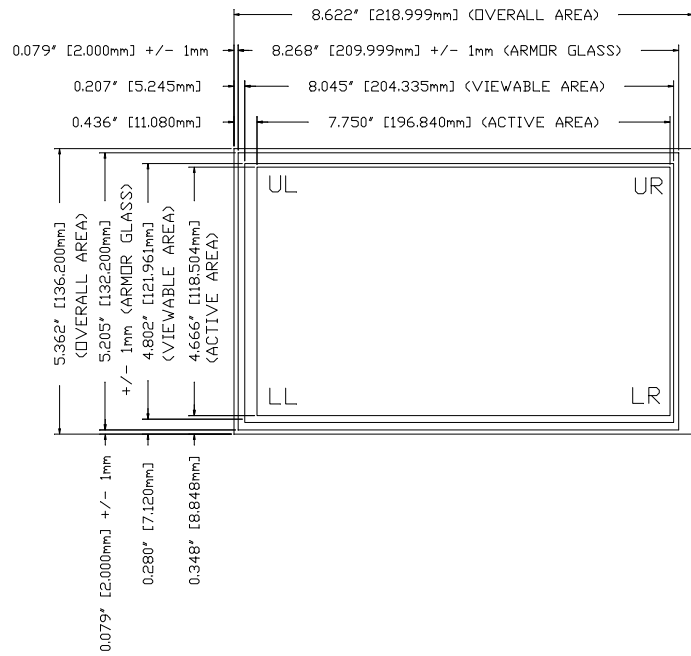


THIS DRAWING IS THE PROPERTY OF AD METRO. IT IS TO BE USED ONLY FOR THE PROJECT AND FOR THE QUANTITY SPECIFIED. IT IS NOT TO BE REPRODUCED OR TRANSMITTED IN ANY FORM OR BY ANY MEANS, ELECTRONIC OR MECHANICAL, INCLUDING PHOTOCOPYING, RECORDING, OR BY ANY INFORMATION STORAGE AND RETRIEVAL SYSTEM, WITHOUT THE WRITTEN PERMISSION OF AD METRO.

REVISIONS			
LET	DESCRIPTION	DATE	BY
A	INITIAL RELEASE	06-25-12	DZ

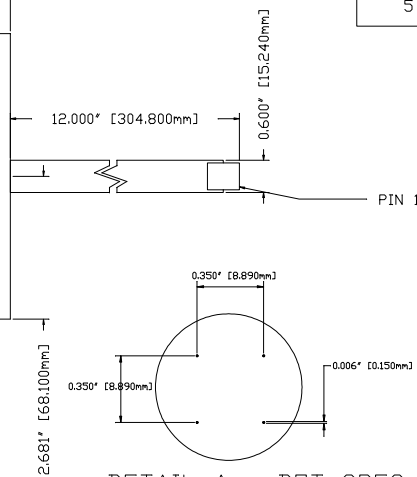
FRONT VIEW
SCALE 1:1



PIN	X1
1	LL
2	LR
3	SENSE
4	UR
5	UL

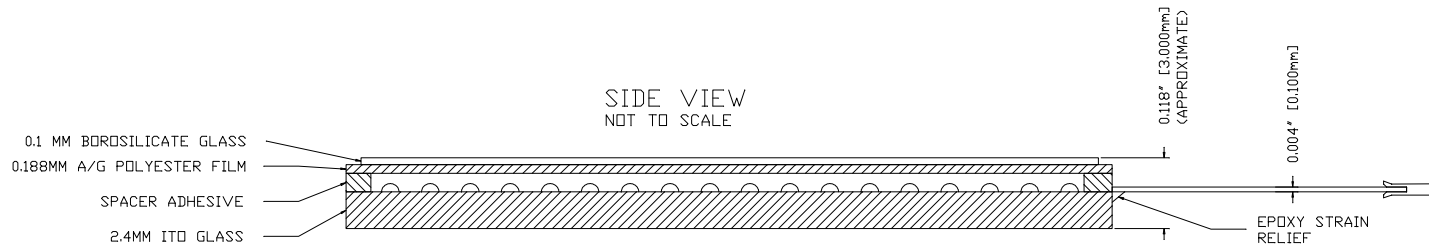
NOTES:

- SUBSTRATE: 2.4MM ITO GLASS.
- ALL DIMENSIONS IN INCHES [MILLIMETERS].
- SAFETY SEAM ON ALL EDGES.
- CABLE: 5-PIN FPC TYPE.
- CONNECTOR: AMP TYPE WITH 0.1" [2.54MM] CENTERS, NON LATCHING, PART NUMBER 487378-4 OR EQUIVALENT.
- TOUCH SCREEN TO BE ACTIVATED WITHIN ACTIVE AREA ONLY. AREA BETWEEN ACTIVE AND VIEWABLE AREAS MUST HAVE A SCREENED ON DIELECTRIC.
- TOTAL SENSOR THICKNESS: 0.118" [3.000MM].
- LINEARITY PATTERN: PEPPER.
- TOUCH ACTIVATION FORCE: 50g +/- 5g. VERIFICATION PENDING UPON RECEIPT OF PROTOTYPE SENSORS.



DETAIL A - DOT SPEC
SCALE 5:1

SIDE VIEW
NOT TO SCALE



		A D METRO - 1881 PARSONS ST - OTTAWA, ONTARIO	
AD9.0ULTRA			
TOLERANCING UNLESS OTHERWISE SPECIFIED SEE MECHANICAL ANGLES 90°	DRAWN BY: JZ DATE: 06-25-12 PROJECT: N/A	PROJECT/PART No.: --	SHALL SCALE SHEET: 1 OF 1 PART No.: 3A99373
TO NOT SCALE DRAWINGS			